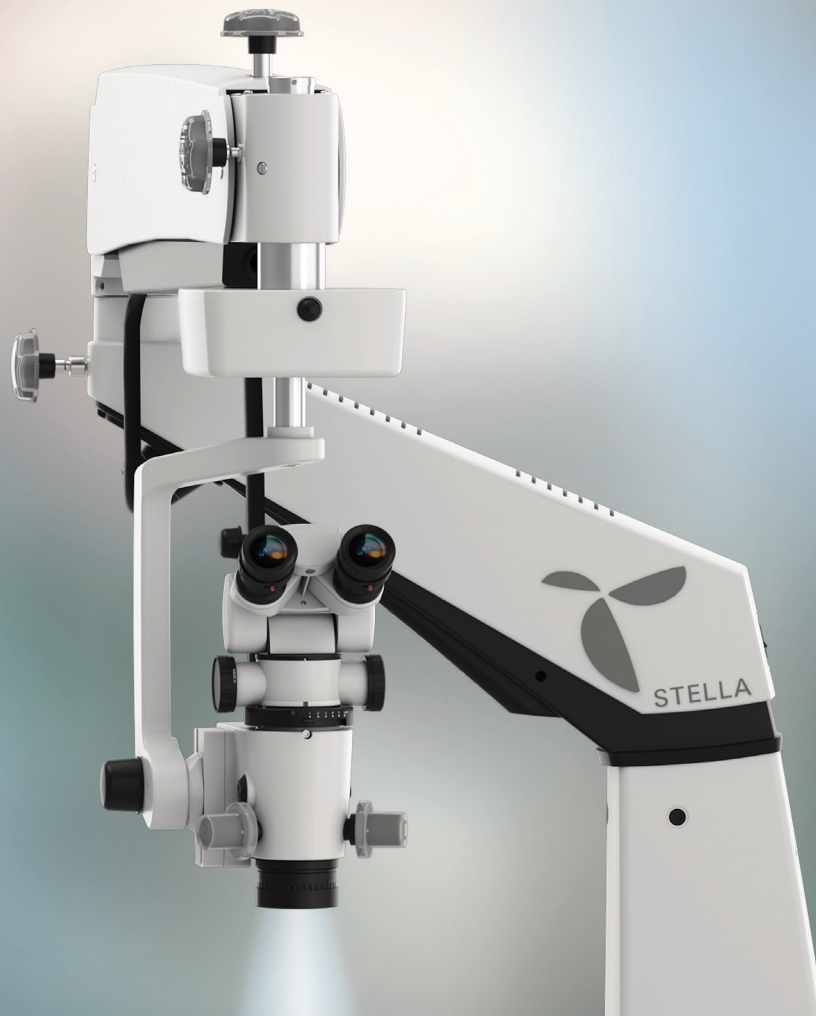


STELLA N

OPERATING MICROSCOPE



A SHINING NEW BEACON IN ENT SURGICAL IMAGING



A brilliant new era in surgical imaging technology is here. Stella promotes greater flexibility, performance, and affordability in ENT, neuro, spinal, and reconstructive surgery.

A multi-functional microscope, Stella offers a suite of features that will enhance surgical precision and comfort, from a 10-way foot controlled motorized apochromatic optical system, easy adaptation of video accessories, multiple interoperative viewing modes, as well as articulation and control features that make the microscope more nimble and responsive to operative needs.

A sturdy stand with counterbalance rotation and a market leading service and support ensure operators a lifetime of carefree use.

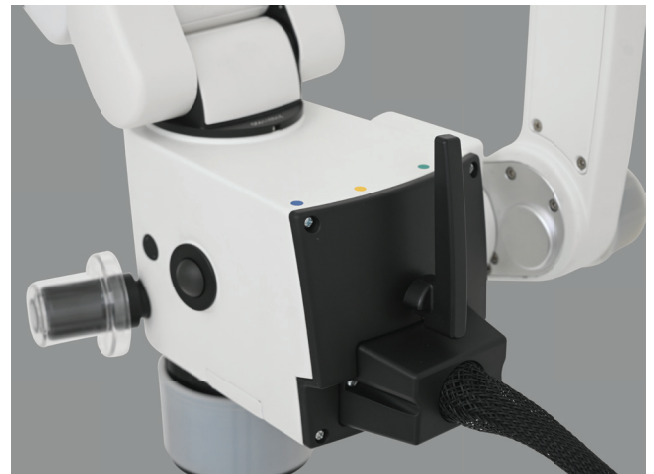
PRECISE FUNCTIONALITY AT EVERY TURN



Stella provides surgeons a waterproof foot control (10-way) that will effortlessly drive X, Y, and Z axis motors alongside magnichanger and light intensity adjustment functions. Conveniently housed in the arm system is an IR and UV safe LED (6500 kelvin) that will provide cool, crisp and bright-white illumination (rated 60,000 hours of LED life).



Unlike other cylindrical columns, Stella's novel triangular column system will pivot with the arm, distributing weight more evenly while maintaining a near perfect center of gravity for vibration free operation. An F=200-400 mm NuVar variable working distance apochromatic objective delivers a superior depth of field and versatility not just for varied procedures, but also accommodates multi-user environments.



“We enjoy the ease with which the system adjusts for supine and upright patients!”



CLEVER DESIGN ENHANCES MODULARITY AND SAFETY

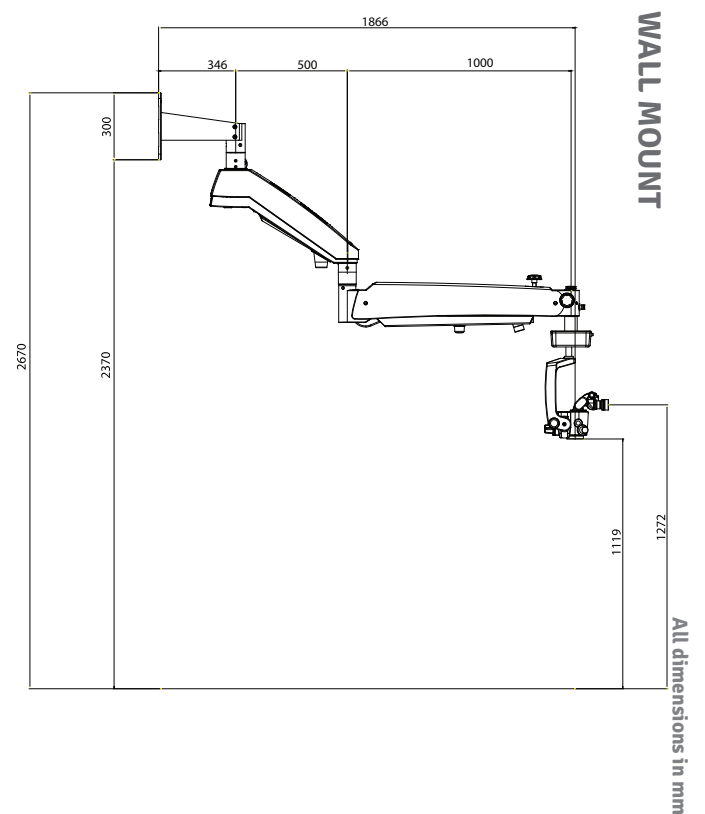
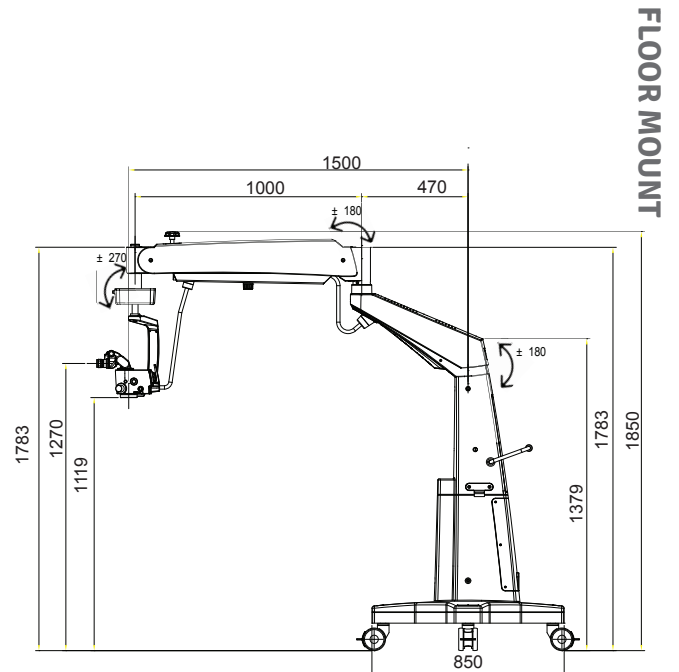


Our ProLine series of video adapters and accessories features single and double beam splitters, DSLR camera adapters for all major makes and models, smart phone adapters, and an assistant viewer bridge for co-observation. With the addition to our Stella VESA mount, operators can add an HD monitor to the microscopes arm for live streaming and image preview (HDMI and Bluetooth screen sharing on smart monitors).

Magnification change is easily achieved thanks to an intuitive foot control function, enabling quick toggling. Stella's EZtilt tilting carrier articulates the microscope 180° on axis, enabling a change in viewing angle to accommodate different angles of surgical access so common in ENT procedures involving ear and nasal canals.

A smooth, noise free motor drive will seamlessly transition the optical head in X, Y, and Z axes, enabling scanning of ocular anatomy with a high degree of sensitivity. Quickly reset XYZ center back to factory settings with the push of a button.

Stella comes in two unique configurations tailored to floor & wall installations, designed to minimize monopolization of space while ensuring the highest level of user safety.



STELLA N

| | |
|---|---|
| Stand | Robust vibration free stand on star base with four lockable castors |
| Observation tubes: | 0-210° Binocular tiltable head F=170 mm configured with Double Iris attachment for depth of field management |
| IPD Range: | 49-78 mm |
| Eyepieces: | Standard: WF 12.5X/18 mm with eye guards Option: WF 10X/18 mm with eye guards |
| Dioptr Adjustment: | ±7 mm |
| Magnichanger: | MaxLite coated, Apochromatic, motorized step changer with Double beam splitter 5 steps: 0.4X, 0.6X, 1.0X, 1.6X, 2.5X |
| Stereo Base: | 24 mm |
| Microscope Tilt: | 0-180°(Tiltable and auto locked at any position) |
| Objective: | NuVar 20 variable CMO, F=295-495 mm, WD=200-400 mm |
| FOV diameter: | 128.4 mm–12.30 mm |
| Magnification Range: | 1.8X–18.3X |
| Illumination field diameter: | 100-160 mm |
| Fine focus: | Range 40 mm, motorized noise free |
| XY Travel: | 50 X 50 mm with auto reset |
| Light source: | UV & IR free 50 W LED |
| LUX: | 150K |
| Maximum Wattage: | 200 W |
| Color temperature: | 6500K |
| Built-in filters: | Flip in/out blue blocking (yellow), Green & Blue filter |
| Optional accessories: | Assistant binocular attachment, Proline range of camera adapters, Smart phone adapters |
| Total Arm Reach(Max): | 1500 mm |
| Vertical movement of suspension arm: | ±300 mm |
| Foot Switch: | 10 function wired foot switch for xyz, magnichanger & intensity control |
| Max. Suspension load: | 12 kg |
| Base & column weight: | 170 kg |
| Arm Weight: | 24.5 kg |
| X-Y, magnichanger, head weight: | 8.7 kg |

| DESCRIPTION | CONFIGURATION | CATALOG NO. |
|-------------|---------------|-------------|
| STELLA N | Floor Stand | 6219200 |
| STELLA N | Wall Mount | 6219201 |

SPECIFICATIONS



Labo America, Inc.
920 Auburn Court
Fremont, CA 94538
Tel: (510) 445-1257
Fax: (510) 445-1317
E-mail: sales@laboamerica.com

www.laboamerica.com



Distributor